



Heavy Mountain Snow & Moderate to Heavy Rain This Weekend - Early Next Week; Gusty Southerly Winds Saturday and Monday

KEY POINTS

- Mainly dry Thursday, but wet pattern continues into next week with renewed flooding concerns and mountain travel impacts
- Gusty southerly winds on Saturday, and again Sunday Night-Monday, strongest Saturday
- Continued rises on area creeks and streams; limited mainstem river flooding expected
- Potential for storm track to shift north of California middle to end of next week

CHANGES FROM PREVIOUS BRIEFING

- Changed Thursday to little to no impact
- Added thunderstorm chances to Friday

WEATHER RISK OUTLOOK

Risk levels incorporate potential impacts from weather hazards and likelihood of occurrence for a reasonable worse case scenario.

	Thu 1/12	Fri 1/13	Sat 1/14	Sun 1/15	Mon 1/16	Tue 1/17	Wed 1/18
Valley		Rain Thunderstorms	Rain Flooding Wind Thunderstorms	Rain Flooding	Rain Flooding Wind	Rain	Rain
Foothills		Rain Thunderstorms	Rain Flooding Wind Thunderstorms	Rain Flooding	Rain Flooding Wind	Rain	Rain
Mountains		Snow	Snow Wind	Snow (PM)	Snow Wind	Snow	Snow

Risk Levels

Little to None

Minor

Moderate

Major

Extreme

DETAILS

Valley, Foothills



Heavy Rain

Impacts:

- Periods of moderate to heavy rain on already saturated soils could lead to areas of rapidly developing roadway & urban flooding, with possible impassable roadways due to flooding or flood damage
- Flooding on small streams and creeks with continued rises with rain
- Rock/mud slides on steep terrain in the foothills

Timing:

- Friday through Wednesday, Heaviest Saturday and Monday

Confidence:

- Medium for timing and amounts

Friday- Saturday Night

- Moderate to heavy rain, heaviest on Saturday
- Renewed urban and small stream flooding concerns
- Valley: 85-98% probability of > 0.5 inch. 45-85% probability of > 1 inch
- Foothills: 85-100% probability of > 1 inch. 10-45% probability of > 2 inches

Sunday - Monday Night

- Another round of moderate to heavy rain, heaviest overnight into Monday
- Renewed urban and small stream flooding concerns
- Valley: 45-75% probability of > 0.5 inch. 10-35% probability of > 1 inch
- Foothills: 30-60% probability of > 1 inch. 40-85% probability of > 2 inches

Tuesday - Wednesday

- Another round of moderate rain, heaviest Tuesday night into early Wednesday
- See graphics for forecast amounts



Wind

Impacts:

- Gusty winds will cause downed trees and power outages due to saturated soils
- Unsecured items could be impacted, including temporary structures
- Difficult driving conditions, especially for high profile vehicles

Timing:

- Saturday and Monday

Confidence:

- Medium

- Gusty southerly winds across the Sacramento & northern San Joaquin Valleys and adjacent foothills

Saturday

- 80-95% probability of > 25 mph wind gusts. Sacramento Valley: 50-75% probability of > 40 mph wind gusts. Northern San Joaquin Valley: 10-50% probability of > 40 mph wind gusts

Monday

- 60-85% probability of > 25 mph wind gusts. Sacramento Valley: 35-50% probability of > 40 mph wind gusts. Northern San Joaquin Valley: 15-45% probability of > 40 mph wind gusts



Thunderstorms

Impacts:

- Thunderstorms may produce dangerous lightning, gusty winds, small accumulating hail, brief heavy rain

Timing:

- Friday - Saturday

Confidence:

- Low

- Isolated thunderstorms in the Southern Sacramento & Northern San Joaquin Valleys and adjacent foothills
- Best chances in the afternoons and evenings
- Rain rates are expected to remain below debris flow criteria at this time, but we will continue to monitor

Mountains



Snow

Impacts:

- Dangerous travel conditions with chain controls and road closures possible and white-out conditions

Timing:

- Friday-Wednesday, Heaviest Saturday-Saturday Night, Sunday Night - Monday, and Wednesday

Confidence:

- High

Friday - Saturday Night

- Additional moderate to heavy snow with multiple feet possible, heaviest Saturday
- Snow levels 5500-6500 ft, falling to 4500-5500 ft late Saturday night
- At pass level: 85-100% probability of > 12 inches. 55-80% probability of > 24 inches. 15-45% probability of > 36 inches

Sunday - Monday Night

- Additional moderate to heavy snow with multiple feet possible, heaviest overnight into Monday
- Snow levels 3500-4500 ft

Tuesday - Wednesday

- Additional moderate to locally heavy snow, heaviest overnight into Wednesday
- Snow levels 3500-4500 ft

- See graphics for forecast amounts



Wind

Impacts:

- Strong winds could cause downed trees and tree limbs and local power outages
- Unsecured items could be impacted, including temporary structures
- Difficult driving conditions for high profile vehicles

Timing:

- Saturday and Monday

Confidence:

- High

- Gusty southerly winds

Saturday

- 75-100% probability of > 40 mph wind gusts, 70-90% probability of > 45 mph wind gusts at highest peaks

Monday

- 50-70% probability of > 40 mph wind gusts, 40-60% probability of > 45 mph wind gusts at highest peaks

- See graphic for forecast wind gusts

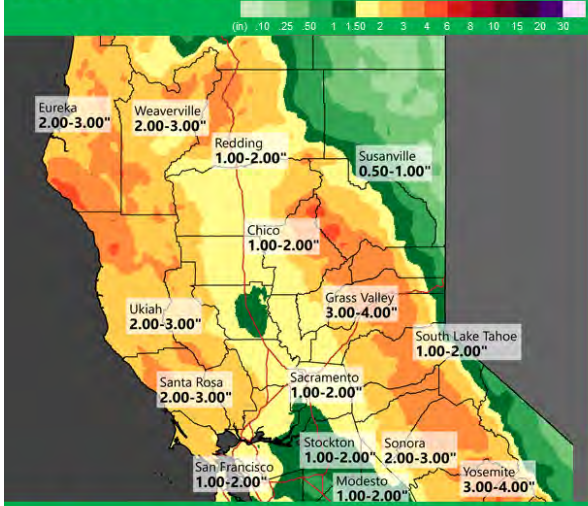
FOR MORE INFORMATION

For the latest forecast updates, visit [weather.gov/sacramento](https://www.weather.gov/sacramento).

If you have questions or would like to submit weather reports, photos, or to unsubscribe from these briefings, email nws.sacramento@noaa.gov or call (916) 979-3045.

GRAPHICS

Rain Forecast



Impact



Moderate to heavy rain



Longer than normal travel time



Ponding water and roadway flooding

Timing



Friday - Saturday Night, heaviest Saturday



National Weather Service - Sacramento, CA
weather.gov/sto

Updated: Thursday, January 12, 2023

RainForecast.png

Continued Flooding Concerns

Valid: 4 AM Saturday, January 14 - 4 AM Sunday, January 15, 2023



Forecast

Periods of moderate to heavy rain. 1-3 inches of rain, with locally higher amounts.



Ponding water & roadway flooding



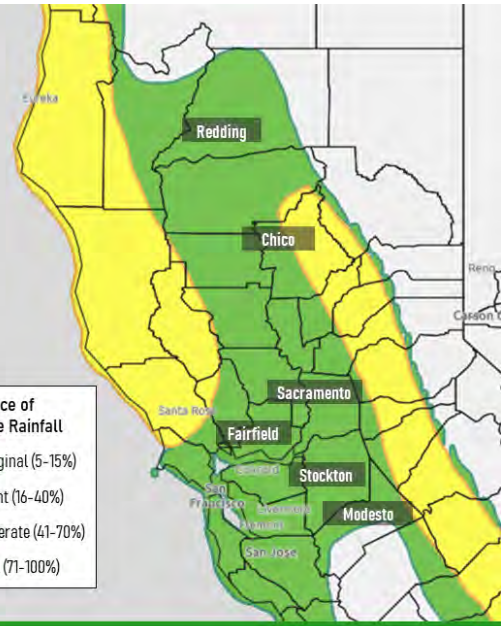
Rises on small creeks & streams



Risk of mud and rock slides, especially on burn scars



Do not drive through flooded roadways



Data: WPC

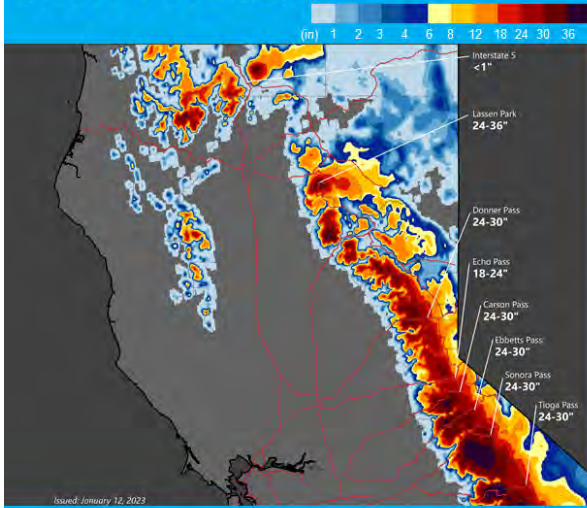


National Weather Service - Sacramento, CA
weather.gov/sto

Updated: Thursday, January 12, 2023

WPCDay3.png

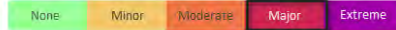
Snow Forecast



National Weather Service - Sacramento, CA
weather.gov/sto

Updated: Thursday, January 12, 2023

Impact



Chain controls and road closures



Strong winds and blowing snow



Reduced visibility

Snow Levels



6000'-7000', lowering to 5000'-6000' Saturday

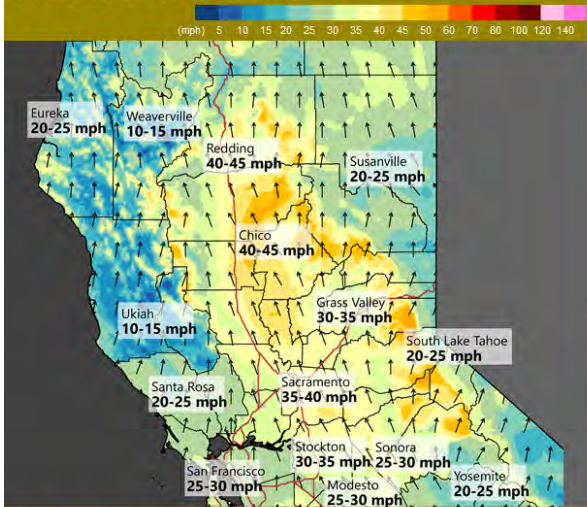
Timing



Friday - Saturday Night, heaviest on Saturday

SnowForecast.png

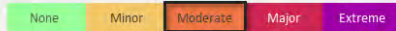
Wind Forecast



National Weather Service - Sacramento, CA
weather.gov/sto

Updated: Thursday, January 12, 2023

Impact



Difficult driving conditions



Downed tree branches and weakened trees



Local power outages possible

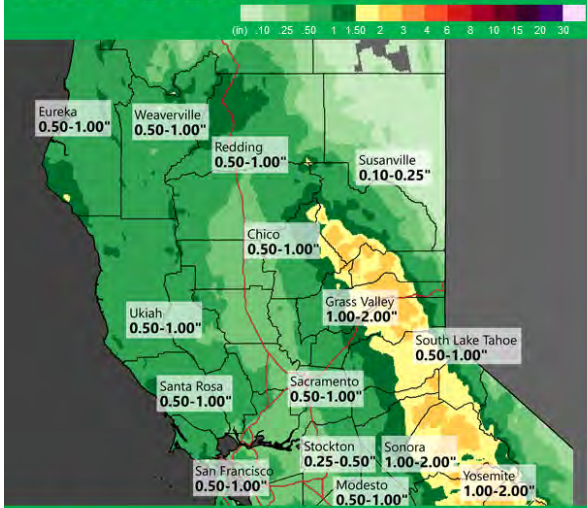
Timing



Saturday, January 14, 2023

WGForecast.png

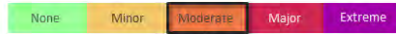
Rain Forecast



National Weather Service - Sacramento, CA
weather.gov/sto

Updated: Thursday, January 12, 2023

Impact



Moderate to heavy rain



Longer than normal travel time



Ponding water and roadway flooding

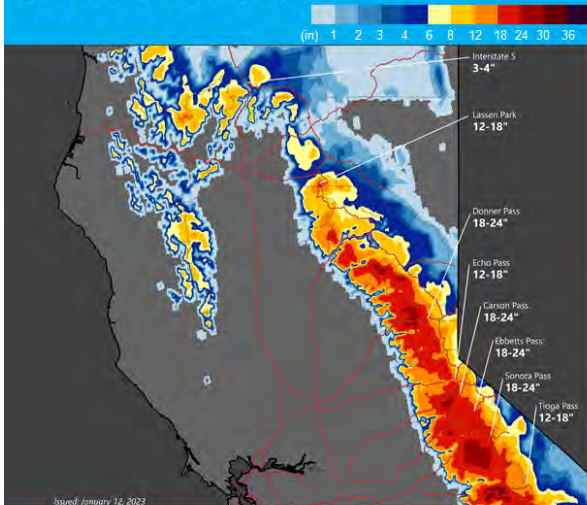
Timing



Sunday - Monday Night, heaviest overnight into Monday

RainForecast2.png

Snow Forecast



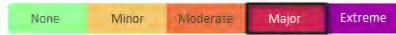
Issued: January 12, 2023



National Weather Service - Sacramento, CA
weather.gov/sto

Updated: Thursday, January 12, 2023

Impact



Chain controls and road closures



Strong winds and blowing snow



Reduced visibility

Snow Levels



3500 feet - 4500 feet

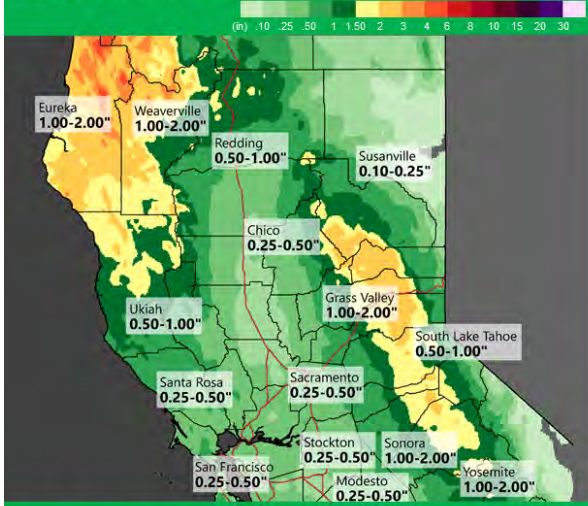
Timing



Sunday - Monday Night, heaviest overnight into Monday

SnowForecast.png

Rain Forecast



National Weather Service - Sacramento, CA
weather.gov/sto

Updated: Thursday, January 12, 2023

Impact



Moderate to locally heavy rain



Longer than normal travel time



Ponding water and roadway flooding

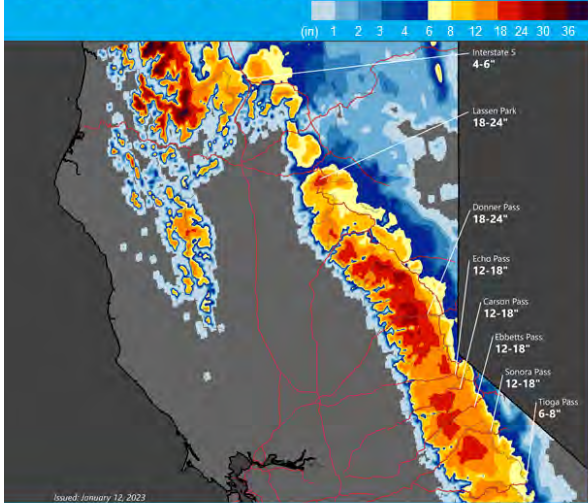
Timing



Tuesday - Wednesday, heaviest Tuesday night into Wednesday

RainForecast_TueWed.png

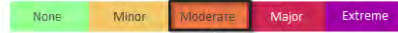
Snow Forecast



National Weather Service - Sacramento, CA
weather.gov/sto

Updated: Thursday, January 12, 2023

Impact



Chain controls and road closures



Strong winds and blowing snow



Reduced visibility

Snow Levels



3500 feet - 4500 feet

Timing

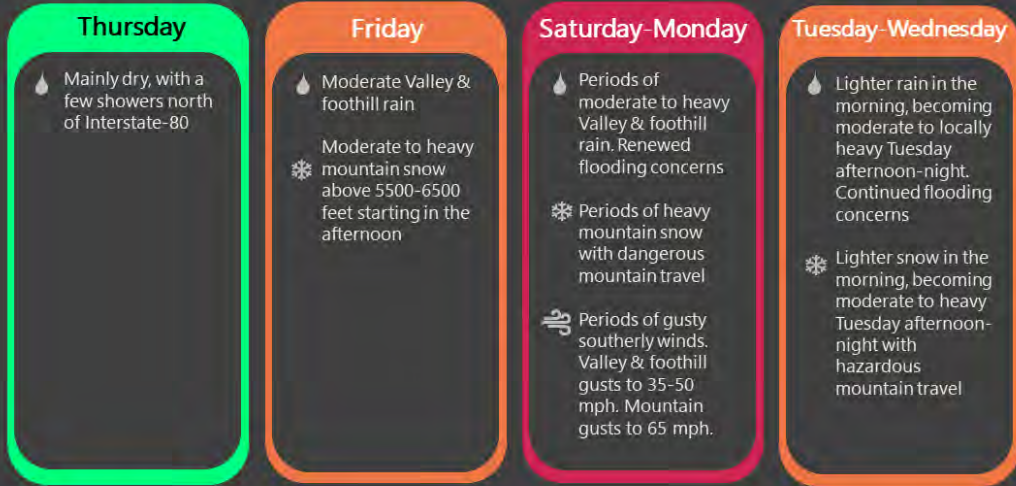


Tuesday - Wednesday, heaviest overnight into Wednesday

Snowforecast.png

Winter Storms Continue into Early Next Week

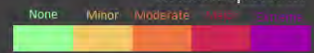
January 11-18, 2023
Interior Northern California



NATIONAL WEATHER SERVICE

SACRAMENTO, CA • UPDATED: Thursday, January 12, 2023

Weather Impact Level



Timeline.png



Photo: Daily Astorian

BE PREPARED FOR:

-  Chain controls & travel delays
-  Slick snow covered roads
-  Gusty winds may cause limited visibility

WINTER WEATHER

NWS Sacramento

WHAT TO DO:

-  Carry chains
-  Have an emergency kit
-  Check road conditions quickmap.dot.ca.gov or or 1-800-427-7623



Photo: Brooke Bingaman

Mountain Travel.png